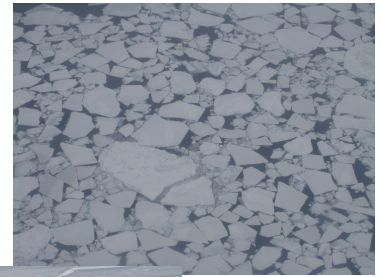


Sea Ice Box ... ! (for all)



... to store all your treasures !!!



You need :

- used boxes (any size)
- eggs (white if possible)
- white and blue acrylic paint
- brush and white glue (Elmers)



Paint boxes in blue and let it dry !

2 coats are required



Keep the egg shells, after using the eggs.

If not white shells, then paint them white . . .

Break them into pieces, flatten them and glue them on the lid !

Sea ice is now represented and will keep your precious treasures !!!